

**FOR LEASE** – ±20,000 SF

**TIDEMARK**

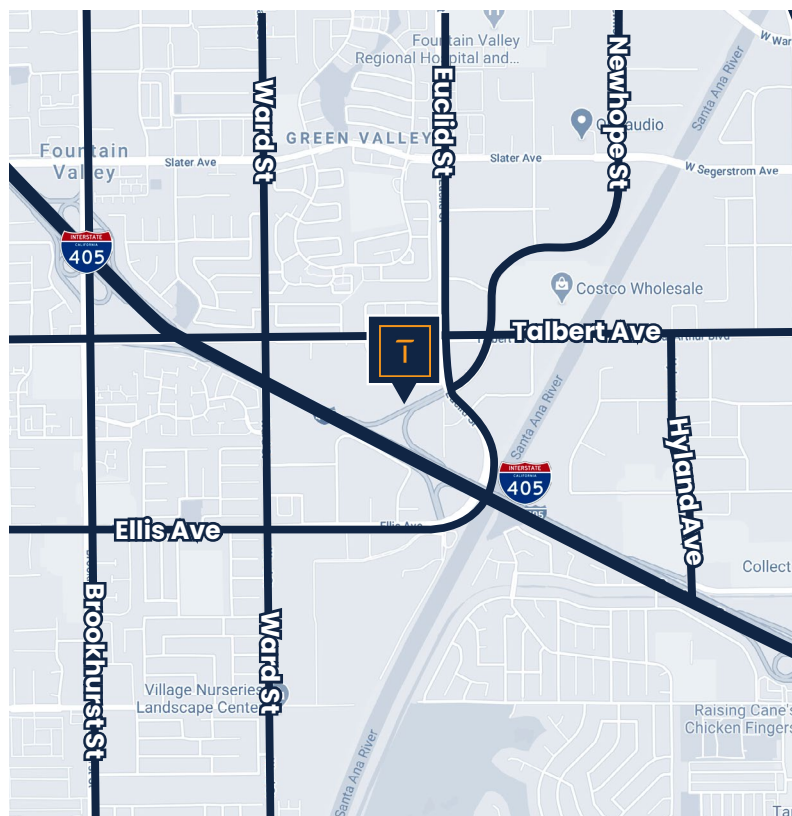
Orange County, CA



**10900 KALAMA RIVER AVENUE  
FOUNTAIN VALLEY, CA**

## PROPERTY FEATURES:

- ◆ 20,000 SF Freestanding Building on an approximate 63,477 Parcel of Land
- ◆ ±3,200 SF of Open Office/Showroom
- ◆ Large Fenced Parking Area
- ◆ ±4:1 Car Parking Ratio
- ◆ ±17' Warehouse Clear Height
- ◆ Fire Sprinklers
- ◆ 600 Amps of Power (verify)
- ◆ Nine (9) Ground Level Loading Doors
- ◆ Euclid Freeway off-ramp and on-ramp signage
- ◆ Immediate San Diego (405) Freeway Access
- ◆ Some Auto uses possible (verify)



## CONTACT US:

**JIM SNYDER, CCIM, CPM®**  
SENIOR PARTNER  
(949) 561-1900 ext. 3  
jim@tidemarkrealestate.com  
DRE 00872220

**PAT LACEY**  
SENIOR PARTNER  
(949) 561-1900 ext. 1  
pat@tidemarkrealestate.com  
DRE 00988663

**TAYLOR SNYDER**  
PARTNER  
(949) 561-1900 ext. 5  
taylor@tidemarkrealestate.com  
DRE 02092420

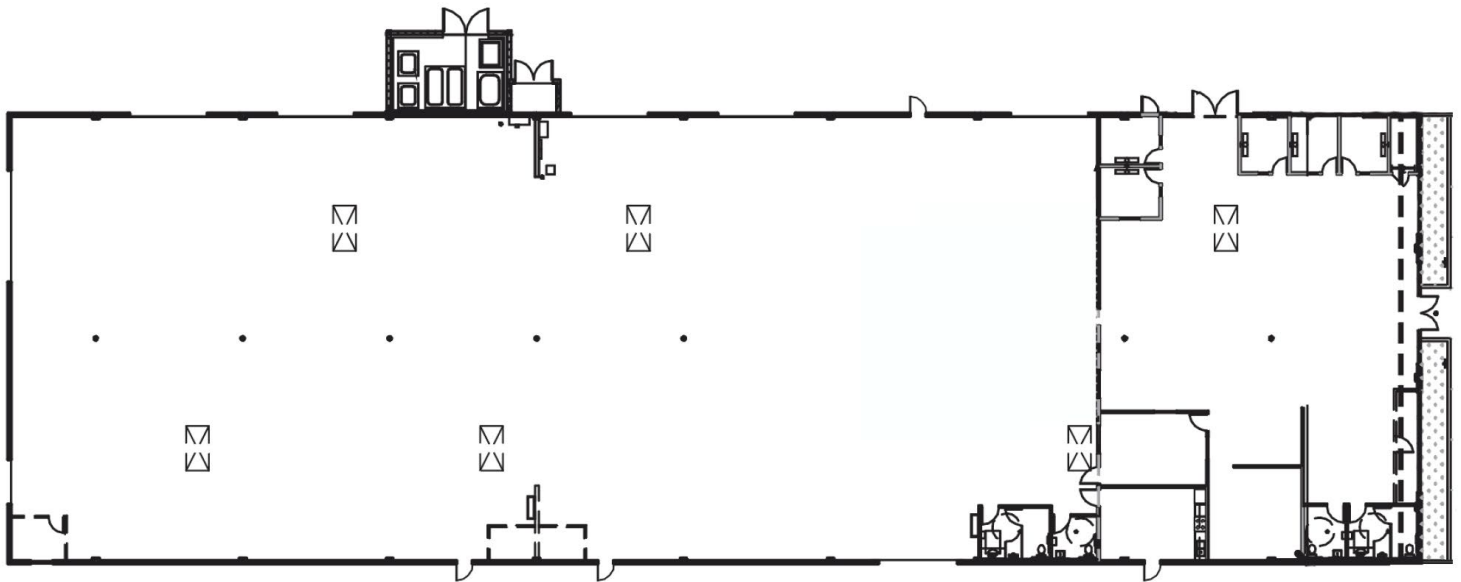
**T**  
**TIDEMARK**  
Real Estate Services

DISCLAIMER: The information contained herein has been obtained from the property owner or other third party and is provided to you without verification as to accuracy. We (Tidemark Capital, Inc., its brokers, employees, agents, principals, officers, directors and affiliates) make no warranty or representation regarding the information, property, or transaction. You and your attorneys, advisors and consultants should conduct your own investigation of the property and transaction.

**FOR LEASE** – ±20,000 SF

**TIDEMARK**

Orange County, CA



**CONTACT US:**

**JIM SNYDER, CCIM, CPM®**  
SENIOR PARTNER  
(949) 561-1900 ext. 3  
jim@tidemarkrealestate.com  
DRE 00872220

**PAT LACEY**  
SENIOR PARTNER  
(949) 561-1900 ext. 1  
pat@tidemarkrealestate.com  
DRE 00988663

**TAYLOR SNYDER**  
PARTNER  
(949) 561-1900 ext. 5  
taylor@tidemarkrealestate.com  
DRE 02092420



**TIDEMARK**  
Real Estate Services

DISCLAIMER: The information contained herein has been obtained from the property owner or other third party and is provided to you without verification as to accuracy. We (Tidemark Capital, Inc., its brokers, employees, agents, principals, officers, directors and affiliates) make no warranty or representation regarding the information, property, or transaction. You and your attorneys, advisors and consultants should conduct your own investigation of the property and transaction.