

FOR SALE- 8,572 SF

TIDEMARK

Orange County, CA



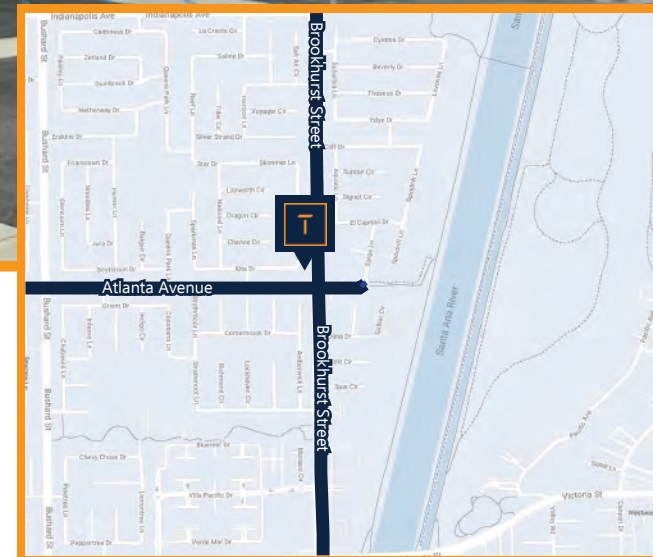
20951 BROOKHURST ST,
HUNTINGTON BEACH, CA

CONTACT US:

PAT LACEY
SENIOR PARTNER
(949) 561-1900 ext. 1
pat@tidemarkrealestate.com
DRE 00988663

Holly Forsythe
SENIOR LEASING ASSOCIATE
PRES Companies
(949)-442-5951
hforsythe@prescompanies.com

JIM SNYDER, CCIM, CPM
SENIOR PARTNER
(949) 561-1900 ext. 3
jim@tidemarkrealestate.com
DRE 00872220



DISCLAIMER: The Information contained herein has been obtained from the property owner or other third parties and is provided to you without verification as to the accuracy. Tidemark Capital Inc., its brokers, employees, agents, principals, officers, directors and affiliates, make no warranty or representation regarding the information, property or transaction. You, your attorneys, advisors and consultants should conduct your own investigation of the property and transaction.

20951 BROOKHURST ST, HUNTINGTON BEACH, CA

Building Size	8,572 SF
Lot Size	0.47 Acres
Year Built	1971
Parking Ratio	3 per 1,000
Number Suites	Six (6) Spaces
Zoning	OP, Huntington Beach

PROPERTY FEATURES:

- Two-Story Office Building
- Signalized Corner Location
- Pylon Sign and on Major Intersection
- Twenty Eight (28 Surface Parking Spaces)
- Costal Location Approximately Two (2) Miles From the Ocean
- Retail Amenities within Walking Distance
- Ample Natural Light
- Recently Renovated Interiors



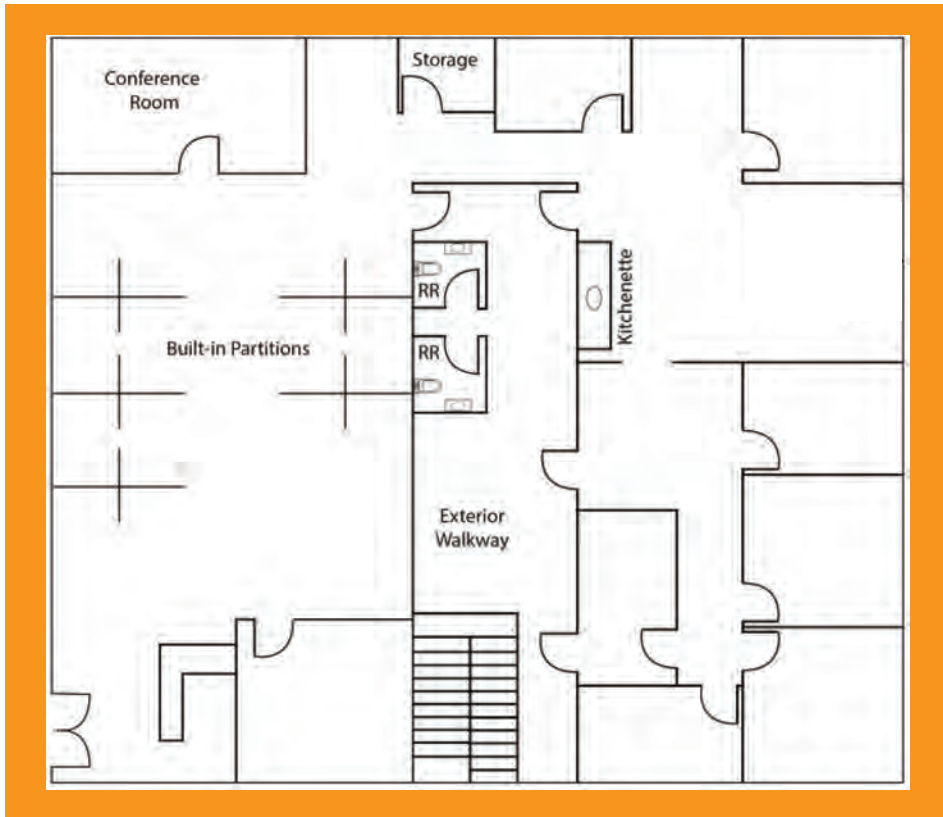
CONTACT US:

PAT LACEY
SENIOR PARTNER
(949) 561-1900 ext. 1
pat@tidemarkrealestate.com
DRE 00988663

Holly Forsythe
SENIOR LEASING ASSOCIATE
PRES Companies
(949)-442-5951
hforsythe@prescompanies.com

JIM SNYDER, CCIM, CPM
SENIOR PARTNER
(949) 561-1900 ext. 3
jim@tidemarkrealestate.com
DRE 00872220

FLOOR PLANS

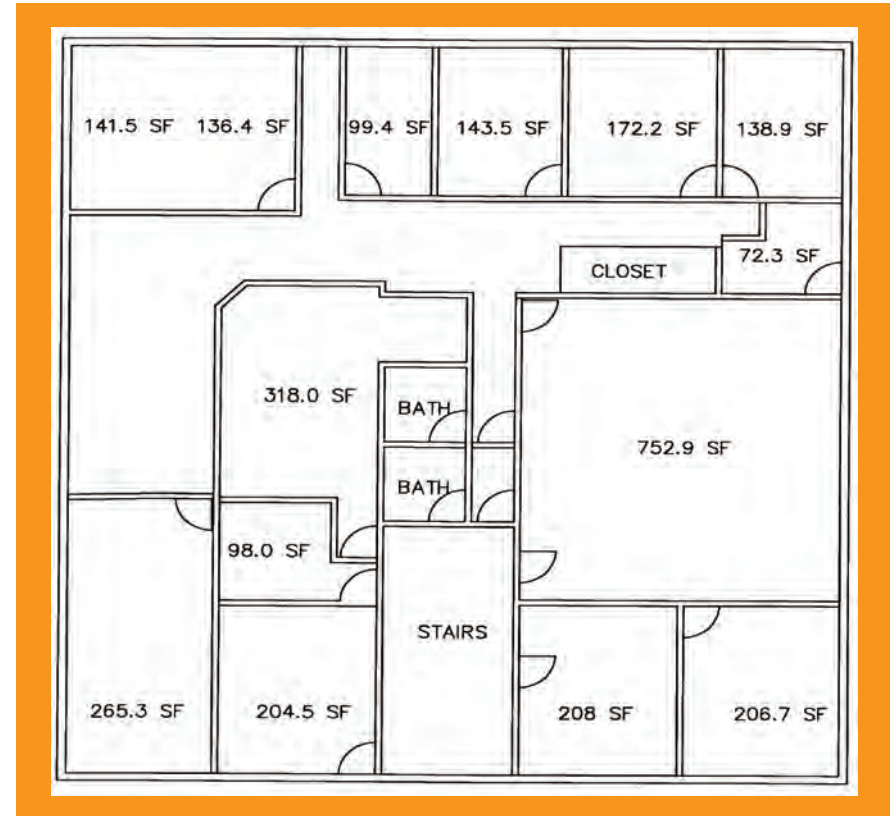


FIRST FLOOR

20951 BROOKHURST ST,
HUNTINGTON BEACH, CA

TIDEMARK

Orange County, CA



SECOND FLOOR

CONTACT US:

PAT LACEY
SENIOR PARTNER
(949) 561-1900 ext. 1
pat@tidemarkrealestate.com
DRE 00988663

Holly Forsythe
SENIOR LEASING ASSOCIATE
PRES Companies
(949)-442-5951
hforsythe@prescompanies.com

JIM SNYDER, CCIM, CPM
SENIOR PARTNER
(949) 561-1900 ext. 3
jim@tidemarkrealestate.com
DRE 00872220

