

FOR LEASE – 10,351 SF

TIDEMARK

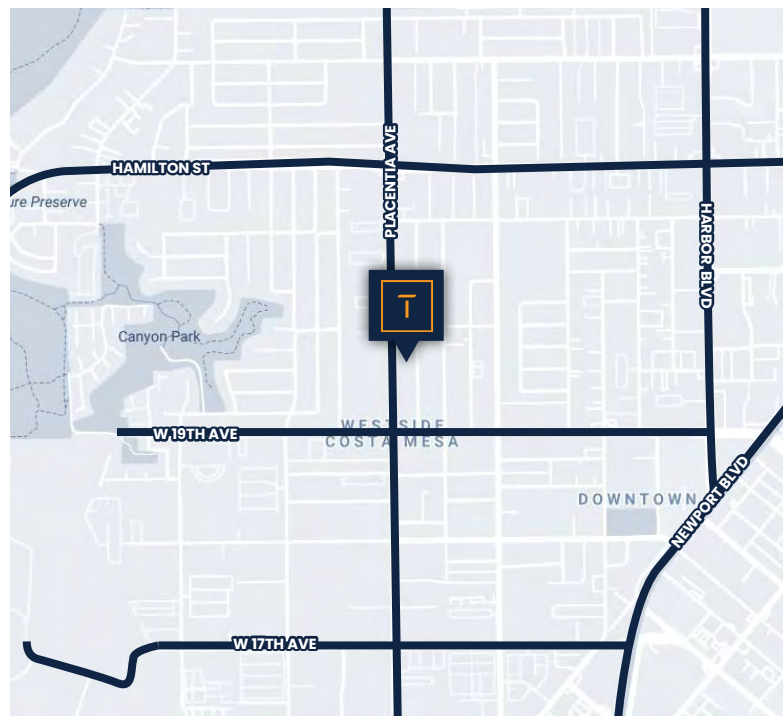
Orange County, CA



1970 PLACENTIA AVE.
COSTA MESA, CA

PROPERTY FEATURES:

- ◆ ±10,351 SF Freestanding Building
- ◆ ±1,400 SF of Office Space
- ◆ ±2,170 SF Drop Ceiling Production Area
- ◆ 400 Amps of Power 277/480 Volt (Verify)
- ◆ Electrical and Air Distribution
- ◆ Shop Restrooms and Kitchen
- ◆ One (1) Ground Level Loading Door
- ◆ Fire Sprinklers
- ◆ Fenced Parking/Yard Area
- ◆ High Identity Location and Signage
- ◆ Near Newport Harbor and Good Access to Pacific Coast Hwy and the 55 Freeway



CONTACT US:

PAT LACEY

SENIOR PARTNER

(949) 561-1900 ext. 1

pat@tidemarkrealestate.com

BRE 00988663

TAYLOR SNYDER

PARTNER

(949) 561-1900 ext. 5

taylor@tidemarkrealestate.com

DRE 02092420

WILL GREUBEL

SENIOR ASSOCIATE

(949) 561-1900 ext. 2

will@tidemarkrealestate.com

DRE 02039807



TIDEMARK

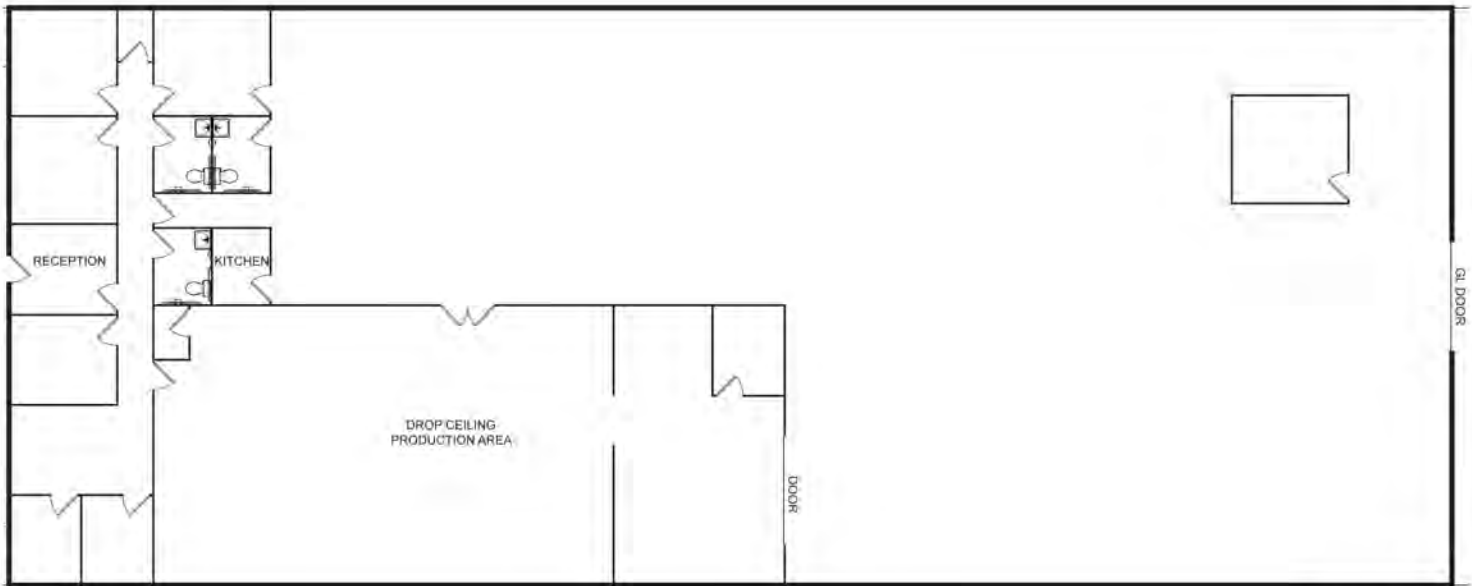
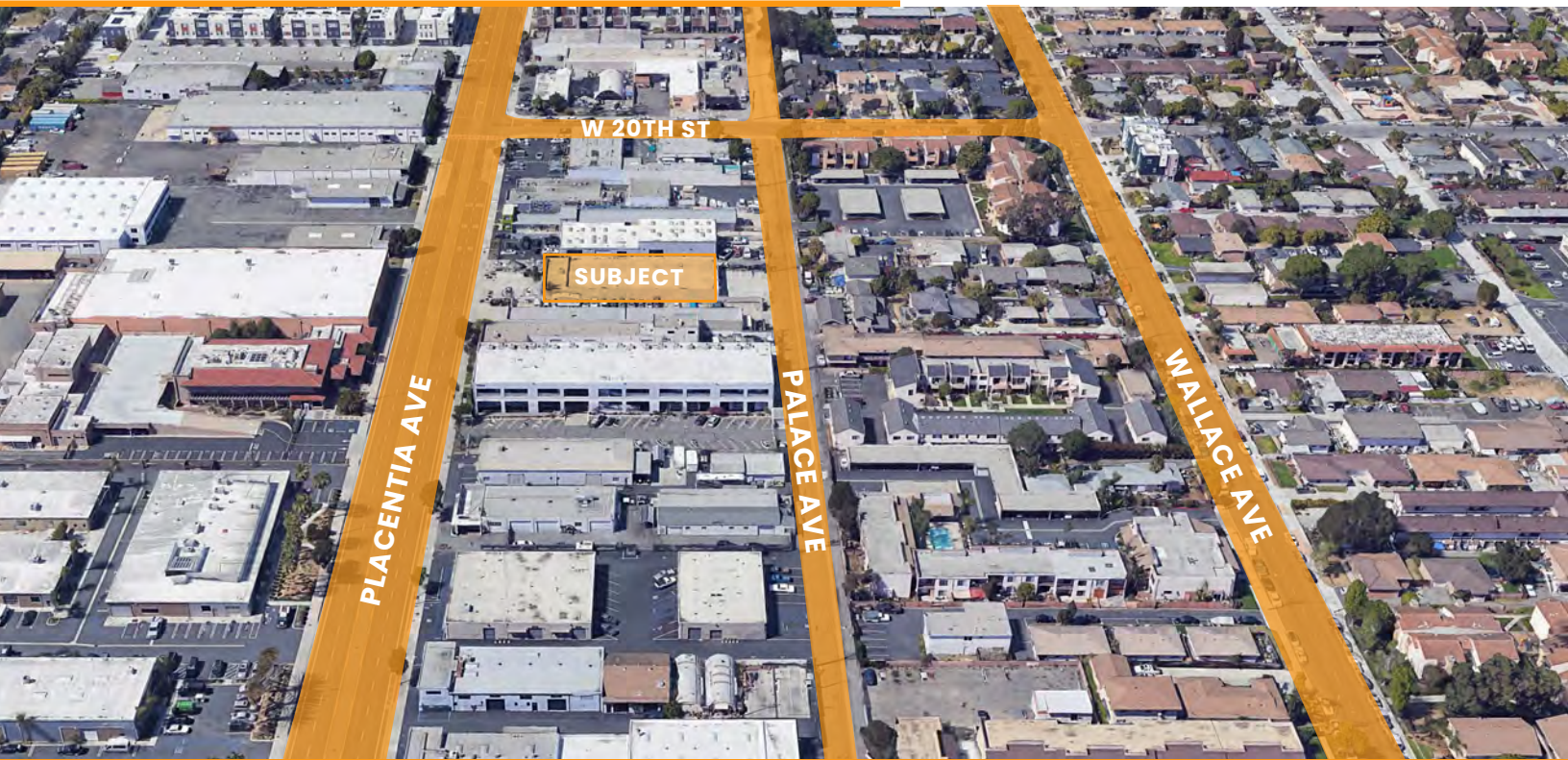
Real Estate Services

DISCLAIMER: The information contained herein has been obtained from the property owner or other third party and is provided to you without verification as to accuracy. We (Tidemark Capital, Inc., its brokers, employees, agents, principals, officers, directors and affiliates) make no warranty or representation regarding the information, property, or transaction. You and your attorneys, advisors and consultants should conduct your own investigation of the property and transaction.

FOR LEASE – 10,351 SF

TIDEMARK

Orange County, CA



NOT TO SCALE. NOT AS BUILT

CONTACT US:

PAT LACEY
SENIOR PARTNER
(949) 561-1900 ext. 1
pat@tidemarkrealestate.com
BRE 00988663

TAYLOR SNYDER
PARTNER
(949) 561-1900 ext. 5
taylor@tidemarkrealestate.com
DRE 02092420

WILL GREUBEL
SENIOR ASSOCIATE
(949) 561-1900 ext. 2
will@tidemarkrealestate.com
DRE 02039807



TIDEMARK
Real Estate Services

DISCLAIMER: The information contained herein has been obtained from the property owner or other third party and is provided to you without verification as to accuracy. We (Tidemark Capital, Inc., its brokers, employees, agents, principals, officers, directors and affiliates) make no warranty or representation regarding the information, property, or transaction. You and your attorneys, advisors and consultants should conduct your own investigation of the property and transaction.